

BENTONE® ULTIMATE series

Rheology modifiers

APPLICATION:

- Colour
- Suncare
- Skincare

SUGGESTED USE LEVEL:

3 - 10%

SUSTAINABILITY CREDENTIALS:

- Vegan
- Sustainable palm
- Cold processable

Unique chemistry,
sustainable solutions

BENTONE® ULTIMATE series

Ultimate efficiency, enhanced formulation flexibility!

The BENTONE® ULTIMATE series marks the introduction of an innovative, patent-pending oil phase rheology technology.

Based on industry leading organically modified hectorite clay, the new gel technology utilises a 100% natural activation system, allowing for exceptionally high activity levels, that supersede traditional systems.

The high activity levels allow manufacturers and formulators for more flexibility in their

application due to the low usage levels and drive the overall stability performance of anhydrous systems.

BENTONE® ULTIMATE products are forming a honeycomb-like structure in the oil-phase, entrapping droplets and pigments.

This structure significantly improves the stability of formulations, prevents sedimentation in anhydrous pigmented formulations, reduces sweating and promotes an even pay-off and coverage.

Features and Benefits

Patent-pending technology

Enhanced formulation flexibility:

- High clay loading for lower use level
- Suggested use level of 3 - 10%

Enhanced suspension of pigments, particles and actives

Convenience:

- Easy dosage
- Easy storage
- Batch-to-batch consistency

Mild activation:

- a fully naturally-derived skin conditioning agent



scan here



to discover the full range

BENTONE® ULTIMATE series

Rheology modifiers

For more details
please contact:

North America

Elementis
469 Old Trenton Road
East Windsor
NJ 08512, USA
T +1 609 443 2500

Europe

Elementis PLC
The Bindery 5th floor
51 - 53 Hatton Garden
London, EC1N 8HN
UK

T +44 208 148 5966

Asia

Deuchem (Shanghai)
Chemical Co., Ltd.
99, Lianyang Road
Songjiang Industrial Zone
Shanghai, China 201613
T +86 21 5774 0348

elementis.com

NOTE:

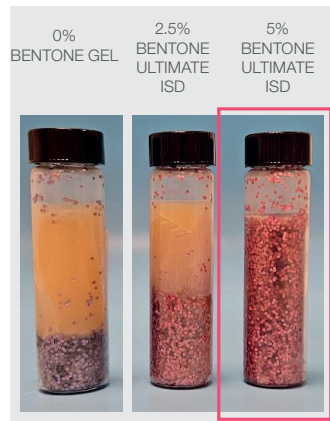
The information herein is currently believed to be accurate. We do not guarantee its accuracy. Purchasers shall not rely on statements herein when purchasing any products. Purchasers should make their own investigations to determine if such products are suitable for a particular use. The products discussed are sold without warranty, express or implied, including a warranty of merchantability and fitness for use. Purchasers will be subject to a separate agreement which will not incorporate this document.

© Copyright 2025, Elementis Specialties, Inc. All rights reserved. Copying and/or downloading of this document or information therein for republication is not allowed unless prior written agreement is obtained from Elementis Specialties, Inc.

®Registered trademark of Elementis Specialties, Inc.

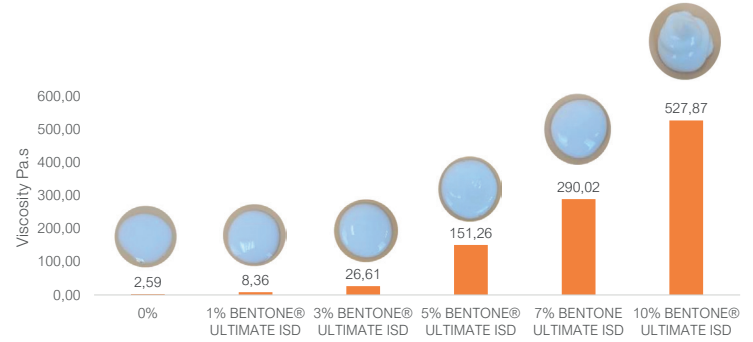
March 2025

Unique chemistry,
sustainable solutions



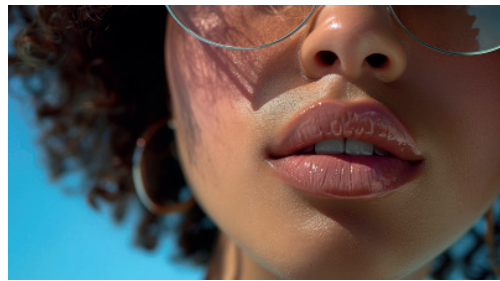
Graphic 1 shows the even distribution, excellent suspension of pigments and stable formulation with BENTONE® ULTIMATE at a use level of only 5%

BENTONE® ULTIMATE ISD concentration curve



Graphic 2 shows concentration curve of BENTONE® ULTIMATE ISD. It shows that formula with BENTONE® ULTIMATE ISD enriches the viscosity at a lower use level compared to traditional systems, enabling versatile formulations, from lotion to rich cream.

Formulation



Sunkissed Lip Balm

This shiny lip balm nourishes and protects the lips with a predicted SPF 30 while delivering high payout. BENTONE® ULTIMATE LC improves stick stability, suspends pigments & organic sunscreen filters, and enhances application.

Procedures:

1. Homogenise Phase A with a Silverson homogeniser until smooth.
2. Transfer Phase A to propeller mixer and add Phase B to Phase A while mixing and heating. Continue heating up to 75°C.
3. Once Phase AB homogenous and melted, add Phase C while mixing.
4. Wet out Phase D until smooth and add to Phase ABC while mixing.
5. Combine Phase E and add to Phase ABCD with mixing at 75°C.
6. Continue mixing while heating and pour off into containers at 80°C.

A	Diisostearyl Malate	39.20
	BENTONE® ULTIMATE LC¹ C9-12 Alkane, Distearidmonium Hectorite, Glyceryl Oleate	7.00
	Jeechem NDA (C9 - 12 Alkane) ²	4.20
	Kahlresin 6723 (Shorea Robusta Resin, Octyl(dodecanol) ³	1.00
	Euxyl™ PE9010 (Phenoxyethanol, Ethylhexylglycerin) ⁴	0.50
B	Candelilla Wax SP-75 (Euphorbia Cerifera (Candelilla) Wax) ⁵	7.00
	Carnauba Wax SP-63 (Copernicia Cerifera (Carnauba) Wax) ⁵	5.00
	White Beeswax SP-422 (Cera Alba (Beeswax)) ⁵	4.00
C	NeoHeliopan 357 (Butyl Methoxydibenzoylmethane) ⁶	3.00
	NeoHeliopan HMS (Homosalate) ⁶	10.00
	NeoHeliopan OS/BP (Ethylhexyl Salicylate) ⁶	5.00
D	Diisostearyl Malate	9.80
	Red 27 Lake	1.45
	Blue 1 Lake	0.05
	KTZ Fine White (Mica, Titanium Dioxide)	1.00
	Chione® Electric Fuchsia (Synthetic Fluorophlogopite, Titanium Dioxide, Iron Oxides, Silica)	1.00
E	Vanilla Mint (sweetener)	0.30
	Tocopherol	0.50

¹ Elementis ² Vantage ³ Kahlwax ⁴ Ashland ⁵ Strahl & Pitsch ⁶ Symrise

A	Isododecane	10.00
	Cetiol® CC (Dicaprylyl Carbonate) ¹	6.00
	BENTONE ULTIMATE ISD² Isododecane, Distearidmonium Hectorite, Glyceryl Oleate	5.00
	Dehymuls® PGPH (Polyglyceryl-2 Dipolyhydroxystearate) ¹	3.00
	Polyglyceryl-3 Diisostearate	2.00
B	D.I. Water	70.00
	Propanediol	2.00
	Sodium Chloride	1.00
	Euxyl™ PE9010 (Phenoxyethanol, Ethylhexylglycerin) ³	1.00

¹ BASF ² Elementis ³ Ashland

Procedures:

1. Combine Phase A with Silverson homogeniser until smooth.
2. Combine Phase B with propeller mixing until salt has dissolved.
3. Add Phase B to A slowly with propeller mixing.
4. Once emulsification complete, continue mixing Phase AB for a few minutes.
5. Transfer Phase AB to Silverson homogeniser and mix for 1 minute.



Bare Canvas Face Base

A cold-processed, lightweight water-in-oil lotion that delivers moisture with a dry yet comfortable feel. At just 7% use level, BENTONE® ULTIMATE ISD ensures emulsion stability and even application.